

# Crossing Boundaries:

## Molecular Interactions in Malaria

INTERNATIONAL RESEARCH TRAINING GROUP

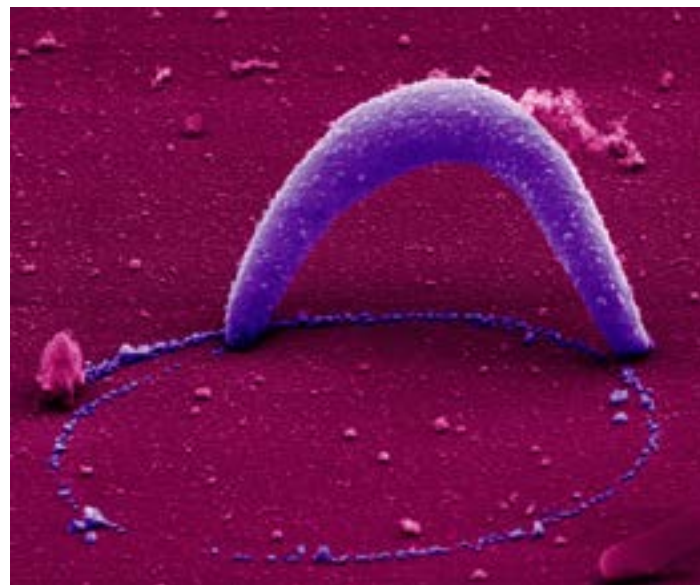


## Berlin - Canberra

Scholarships available at ANU, Canberra

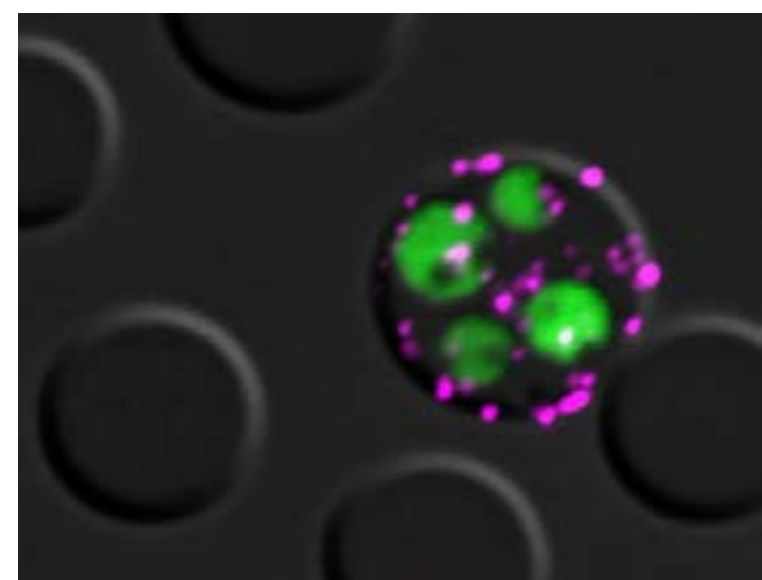
### Our Graduate School:

- Comprehensive Training
- Dual Supervision
- Dual PhD degrees
- Research at two world-class institutions: HU and ANU
- Exposure to academic, industry, and public sector environments



### Research Areas:

- Nutrient Uptake and Metabolism
- Parasite Genetics and Adaptations
- Immune Responses
- Host Genetics and Responses



Ready to cross boundaries?

Visit [www.AllianceBerlinCanberra.org](http://www.AllianceBerlinCanberra.org)

Please contact: [irtg2290office-ifb@hu-berlin.de](mailto:irtg2290office-ifb@hu-berlin.de)

Funded by

